

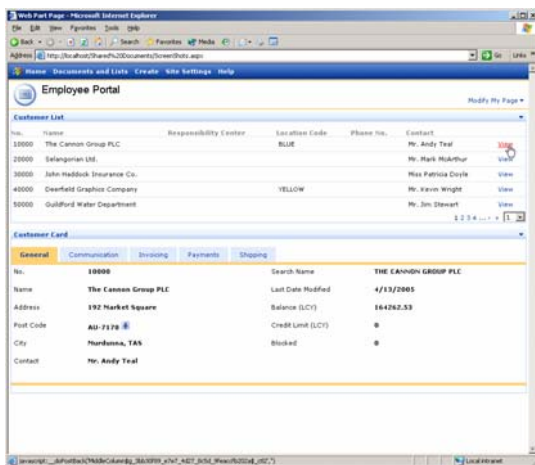
MICROSOFT BUSINESS SOLUTIONS-NAVISON

MICROSOFT® BUSINESS SOLUTIONS-NAVISON® EMPLOYEE PORTAL

Give your employees easy access to the critical business information they need

Key Benefits

- Easy to set up Web-based interface
- Reduces training time and costs
- Increases employee productivity



A cost-efficient way to deploy a Web-based interface

Easy to set up and use

The Microsoft Navision Employee Portal makes it easy for your employees to work with critical business information on your company intranet. Employees use SharePoint – the Microsoft intranet standard – to access real-time business information directly from Microsoft Navision 4.0.

With Microsoft Navision Employee Portal, your employees use a Web-based interface to:

- Get quick updates of real-time business information such as invoices, customer data and reports
- Modify information that is then immediately updated directly in your business system
- Access and share business-related Microsoft Office documents

The framework is intuitive and requires minimal programming. Employee Portal comes with out-of-the-box Microsoft .NET based Web parts, and it is easy to configure on the Microsoft Navision 4.0 backend.

Reduces training time and costs

If your employees have worked with a Microsoft program or surfed the Internet, they have all the experience they need to begin to use the system.

Like all Microsoft Navision solutions, Microsoft Employee Portal has been developed with the user in mind so that it's both intuitive and simple to use. You save on training costs, and your employees can start working immediately. There are no extra software costs. Microsoft SharePoint Services is included in Microsoft Windows Server 2003.



Increases Employee Productivity

Microsoft Navision Employee Portal saves your employees time by giving them instant access to the information they need to do their job.

Now, employees can get the information they need without having to go through licensed Microsoft Navision users. Everyone can have access via Microsoft SharePoint on your intranet.

Salespeople can access customer accounts and sales history, and enter orders. Purchasers can look up stock availability, and production designers can look up BOMs.

Without having to be set up as users, or having to learn a new system, your staff gets access to.

- Analytical reports
- Real-time integrated data
- Sales and service tools

You can create a company-wide intranet where you decide how much access your employees have to the system. This helps ensure that employees remain focused on relevant data, and don't waste time struggling to learn a system that they really don't need to use.

You can even create work-group intranets where information is filtered according to specific interest, for example, a launch portal for a new product.

For more information

To learn more about Microsoft Business Solutions–Navision User Portal, contact your local Microsoft Business Solutions office.

Address:

Business System Solutions
401 Mobil Ave. Suite 8
Camarillo, CA 93010
Phone: (805) 484-6995
Fax: (805) 484-4289
www.navisioninfo.com

About Microsoft Business Solutions

Microsoft Business Solutions, a business group of Microsoft, offers a wide range of integrated, end-to-end business applications and services designed to help small, midmarket segment and corporate businesses become more connected with customers, employees, partners and suppliers. Microsoft Business Solutions applications optimize strategic business processes across financial management, analytics, human resources management, project management, customer relationship management, field service management, supply chain management, e-commerce, manufacturing and retail management. The applications are designed to provide insight to help customers achieve business success. More information about Microsoft Business Solutions can be found at

www.microsoft.com/BusinessSolutions.

Key Features	Description
WINDOWS SHAREPOINT SERVICES	<ul style="list-style-type: none"> ▪ The Microsoft Standard for intranet information sharing ▪ Helps teams share information, collaborate on documents, and collect team knowledge over the Internet or your corporate network ▪ Can scale to thousands of sites within an organization ▪ Encrypted communication and detailed security options are available for easy management ▪ Included in Microsoft Windows 2003, and Microsoft SharePoint Portal Server 2003
OUT-OF-THE-BOX MICROSOFT .NET WEB PARTS	<ul style="list-style-type: none"> ▪ List Web Part: Ideal for displaying a list of customers, vendors or orders ▪ Card Web Part: Can be configured to display a detailed view of data, for example, customer cards ▪ Header/Line Web Part: Display information such as orders
MULTILANGUAGE-ENABLED	<ul style="list-style-type: none"> ▪ Information can be made available in different languages according to the needs of users.
SECURE WEB ACCESS	<ul style="list-style-type: none"> ▪ Allow employees to work with information from Microsoft Navision directly on your intranet, without having to be set up and trained in the business software system ▪ The system encrypts communication to secure your data,
USER AND GROUP-BASED ACCESS CONTROL	<ul style="list-style-type: none"> ▪ Manage content and access by user or group ▪ Personalize settings and default properties

System Requirements

<p>TO OBTAIN ALL OF THE FEATURES MENTIONED IN THIS FACT SHEET, THE FOLLOWING MODULES AND TECHNOLOGIES ARE REQUIRED:</p>	<p>Server Environment:</p> <ul style="list-style-type: none"> ▪ Microsoft Windows Server 2003 <ul style="list-style-type: none"> ▪ Microsoft Windows SharePoint Services SP1 ▪ Microsoft .NET Framework 1.1 ▪ Microsoft J# Redistributable Package 1.1 (Plug-in) ▪ Microsoft Message Queue ▪ Microsoft Navision 4.01 Database Server or SQL Option ▪ Microsoft Navision 4.01 Application Server <p>Client:</p> <ul style="list-style-type: none"> ▪ Microsoft Navision 4.01 Client <p>Web Client:</p> <p>One of the following browsers:</p> <ul style="list-style-type: none"> • Microsoft Internet Explorer 5.01 with Service Pack 2 • Internet Explorer 5.5 with Service Pack 2 • Internet Explorer 6 • Netscape Navigator 6.2 or later • Mozilla 1.4 or later
---	---

XX.XX.2003

The information contained in this document represents the current view of Microsoft Corporation on the issues discussed as of the date of publication. Because Microsoft must respond to changing market conditions, it should not be interpreted to be a commitment on the part of Microsoft, and Microsoft cannot guarantee the accuracy of any information presented after the date of publication.

This document is for informational purposes only. MICROSOFT MAKES NO WARRANTIES, EXPRESS, IMPLIED OR STATUTORY, AS TO THE INFORMATION IN THIS DOCUMENT.

Complying with all applicable copyright laws is the responsibility of the user. Without limiting the rights under copyright, no part of this document may be reproduced, stored in or introduced into a retrieval system, or transmitted in any form or by any means (electronic, mechanical, photocopying, recording, or otherwise), or for any purpose, without the express written permission of Microsoft Corporation.

Microsoft may have patents, patent applications, trademarks, copyrights, or other intellectual property rights covering subject matter in this document. Except as expressly provided in any written license agreement from Microsoft, the furnishing of this document does not give you any license to these patents, trademarks, copyrights, or other intellectual property.

© 2005 Microsoft Corporation. All rights reserved. Microsoft, Outlook, Windows and Navision are either trademarks or registered trademarks of Microsoft Corporation or Microsoft Business Solutions ApS or their affiliates in the United States and/or other countries. Microsoft Business Solutions ApS is a subsidiary of Microsoft Corporation. The names of actual companies and products mentioned herein may be the trademarks of their respective owners.